



## Scurry County 4-H Explorer

TEXAS A&M  
**AGRI**LIFE  
EXTENSION

Ronda White, CEA\_FCS \* Greg Gruben, CEA-ANR

Scurry County Extension Office \* 2605 Ave M, Snyder TX 79549 \* 325-573-5423

January 2016

### Scurry 4-H News

**We want to say Thank You to everyone that has helped with the bake sales, candy sales & booth, Heritage Village Lighting event and general club parties. This would not be a success without you all!**

#### 2016 4-H Club Meeting Dates

January 5 @ 6:00 General Club Meeting

January 5 @ 5:30 Clovers Meeting

January Photography Meeting-TBA

Please watch our Facebook page for updates

#### Shooting Sports

Feb 18-21, 2016-SALE shootout-San Antonio- If you have any questions or concerns please get with Roxanne.

Thank you to the ones that helped with the Hunter's Appreciation Dinner, We received many comments on how good we did and how much we were appreciated.

#### 4-H Horse Club

Scurry County 4-H Horse Club will have regular meetings on the 2<sup>nd</sup> Tuesday of the month at the Senior Center at 6:30 p.m. Members are studying "The horse's respiratory system" this year. The Club will be doing a ball toss fundraiser at the WTC Rodeo (date not set at this time) .

Don't forget to be logging how many hours members spend riding their horses. Most hours logged wins a buckle in each age group!

**Remember - Attending meetings, Fundraisers, & Community Service is required to receive Year End High Point Awards.**

#### Food Challenge

We had 9 members compete @ District in October

**Congratulations to:** 1st place Senior Nutritious Snacks Team (David Ellis, Ashley Martinez & Tabitha Slayton) They will advance to State Competition in June @ State 4-H Round-up @ Texas A&M. Good Luck to these members!

3rd place Intermediate Protein Team (Anzlee Hale, Kirsten Luera & Molly Herring)

1st place Junior Grains Team (Logan Smith, Lauren Callaway & Kelton White)

#### Food & Nutrition

We had 4 members compete @ District in November

**Congratulations to:** 1st place Jr Protein -Lauren Callaway

2nd place Jr Grain -Anzlee Hale

Cooper Caswell & Riley White also competed.

#### Consumer Decision Making

We had 5 members compete @ District in December

**Congratulations to:** 2nd place Intermediate Team (Anzlee Hale, Cooper Caswell, Kambry Jones & Lauren Callaway)

9th place High Individual-Kambry Jones

Kirsten Luera also competed individually in the Intermediate Division.



## Scurry County Jr Livestock Association Livestock Show

### **Show Dates: January 13-16, 2016**

#### **ARRIVAL Must Be in Place Times & Dates:**

Pigs by 4:00pm-Wed, Jan 13, 2016

Lambs & Goats by 7:30am-Fri, Jan 15, 2016

Steers by 11:00am-Thurs, Jan 14, 2016

#### **WEIGH-IN, SIFTING & CLASSIFYING:**

Pigs will be weighed & sifted beginning at 4 pm on Wed. Weight classes will be divided according to the number of entries.

Lambs & Goats will be weighed, sifted & classified beginning at 8 am on Friday.

Steers will be weighed at 11am on Thurs & classified in stalls.

#### **RELEASE TIMES:**

A. Animals may be removed from the barn immediately after their show. Exhibitors qualifying for the premium sale are responsible for having an animal to exhibit in the sale ring.

B. All livestock used in the premium sale must be removed from the barn by Saturday night.

C. Grand & Reserve Champion animals must walk through the Premium Sale ring.

#### **SCHEDULE:**

Pig Show	Thursday, Jan 14 @ 4:00 pm
Lamb Show	Friday, Jan 15 @ 1:00 pm
Goat Show	following the Lamb Show
Steer Show	Friday, Jan 15 @ 5:00 pm
Meal for Buyers	Saturday, Jan 16 @ Noon
Awards Presentation	Saturday, Jan 16 @ 1:30 pm
Auction Sale	Saturday, Jan 16 @ 2:00 pm

#### **JUDGES:**

Pig Judge	Josh Brockman	Spearman, TX
Lamb Judge	Richard Long	Sterling City, TX
Goat Judge	Chad Coburn	Sterling City, TX
Steer Judge	Chad Coburn	Sterling City, TX

## Market Pigs-Special Rules

- Entries will be divided into the following breeds:  
Durocs  
Hampshires  
Other Pure Breeds (OPB)  
Yorkshire  
Other Crossbreed  
Dark Crossbreed (20%+ dark/black body color)
- All Market pig breeds will be set up like the above list. For every increment of (7) pigs, an additional class will be created as indicated:

# Entries	# Classes
1-7	1
8-14	2
15-21	3
22-28	4
28+	5



- Market Pigs must weight a min of 170 lbs with a max limit of 270 lbs.
- Gilts & Barrows are eligible in market classes, to be tagged and validated on date set by Board.
- Breed Champion & Reserve Breed Champion will be selected for each breed and will compete for Grand and Reserve Grand Champion.
- No oil, paint, glue, powder or other dressing will be permitted on Pigs, Water only.
- Prospect Show-Pigs weighing 169 lbs or less at the time of weigh-in on Wed, Jan 16, 2016 are allowed to enter the Prospect Show. There will be an additional entry and a \$10 fee due at the show. The Grand and Reserve Grand Prospect entries will receive a 60/40 payback of all entries collected. These winners are not eligible for Premium Sale.

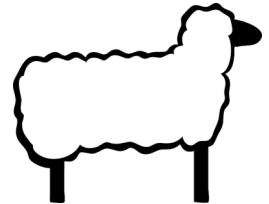
### 2015-Pig-Weight Breaks

Duroc-173-196, 200-219, 225-256  
Hamp-170-186, 190-199, 200-212, 225-254  
OPB-173-184, 185-192, 197-203, 219-232, 239-264  
York-170-195, 205-221, 239-266  
Other Cross-173-184, 185-192, 197-203, 219-232, 239-264  
Dark Cross-179-196, 201-216, 226-269

## Market Lambs-Special Rules

- Ewe & wether lambs are eligible to show. No tooth rule will apply.
- All lambs must be ear tagged for identification & same record on entry blanks.
- Lambs may be prepared & exhibited at exhibitors' discretion. Wool length max length—3/8".
- There will be 4 breeds of lambs eligible to show as follows: Southdown, Finewool, Finewool Cross & Medium Wool.
- Breed Champion & Reserve Breed Champions will be selected for each breed & these will compete for Grand Champion.
- There will be a bottom weight of 90 lbs, except on Southdown where the bottom weight will be 80 lbs.
- Lamb classes will break as follows:

# Entries	# Classes
1-5	1
6-15	2
16-25	3
26+	4



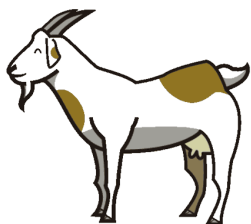
- The lambs will be classified & sifted at the time of weigh-in at the discretion of the SCJLA board of directors.
- Lambs washed only on EAST side of Annex-(NO LAMBS WASHED IN STEER WASH RACK).

### 2015-Lamb-Weight Breaks

Southdown-108-121, 136-154  
Finewool-110-128, 129-138  
Finewool Cross-108-134, 138-148, 151-175  
Medium Wool-115-134, 136-145, 147-162, 166-180

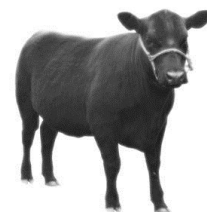
## Market Goats-Special Rules

1. Wether & nannies are eligible for show.
2. All goats must be ear tagged for identification & same recorder on entry blanks.
3. There will be 6 classes of goats.
  - A-Class 1, 2, 3-comprise the LWD
  - B-Class 4, 5, 6-comprise the HWD
  - C-The LW & HW Champions & Reserve Champions will compete for Grand & Reserve Grand Champion Goat.
4. All goats must be sheared 1/4" above hocks.
5. There will be a bottom weight of 60 lbs with a max weight of 135 lbs.
6. Goats washed only on the EAST side of the annex- (NO GOATS WASHED IN THE STEER WASH RACK).



### 2015-Goat-Weight Breaks

60-61, 63-72, 73-80, 81-84, 85-90, 91-108



## Market Steers-Special Rules

1. Each exhibitor may bring 4 animals.
2. Steers must weigh at least 800 lbs.
3. Steers will be divided into classes according to breed weight.
4. Class Division
  - A-The British breeds ( Hereford, Angus & Shorthorn) will show together & be divided into equal classes by weight. (must have a min of 12 steers for 3 classes)
  - B-Exotic-all crossbred & other breeds will show together & be divided into equal classes. 24 or more crossbred steers justify 4 classes, which will be determined by weight.
  - C-American (2 classes) 3 steers justify 1 class, 6-2 classes, 9-3 classes, & 24-4 classes.
5. The show will be a "Blow & Show" format-no glue allowed on any part of the body.

### 2015-Steers-NO Weight Breaks

It's our turn for concession stand at the Scurry County Jr Livestock Association Livestock Show.

This will be a Large fundraiser to support our 4-H Program.

We need Parent & Member involvement to make this successful.

Below is a list of times of operation: Please contact the Extension Office to sign up for times you are available to work.

January 13-Wednesday – 3:00pm-Close

January 14-Thursday– 8:00am-8:00pm

January 15-Friday-8:00am-8:00pm

Members are asked to bring brownies, cookies, cornbread & 24-count sodas, please contact our office to see which item you need to bring. A sign up sheet will also be available at the General Club Meeting on Jan 5th.

## 2016-SCJLA CONCESSION STAND MENU

### **Wednesday**

Pizza by the slice

Candy

Drinks

### **Thursday**

### **& Friday**

Breakfast Burritos

Donuts

Sausage Wraps

Baked Potatoes-loaded, loaded w/ chili

Chili Bowl w/Cornbread

Beans & Cornbread

Nachos

Frito Pie

BBQ Sandwich

Hot Dog, chili cheese dog

Chips

Candy

Dessert

Drinks-sodas, tea, water & powerade

Coffee & Hot Chocolate

# TEXAS A&M AGRI LIFE EXTENSION

Scurry County Extension Office

2605 Ave M

Snyder TX 79549

Educational programs of Texas A&M AgriLife Extension Service are open to all people without regard to race, color, sex, disability, religion, age, or national origin. The Texas A&M University System, U.S. Department of Agriculture, and the County Commissioners Courts of Texas Cooperating.

